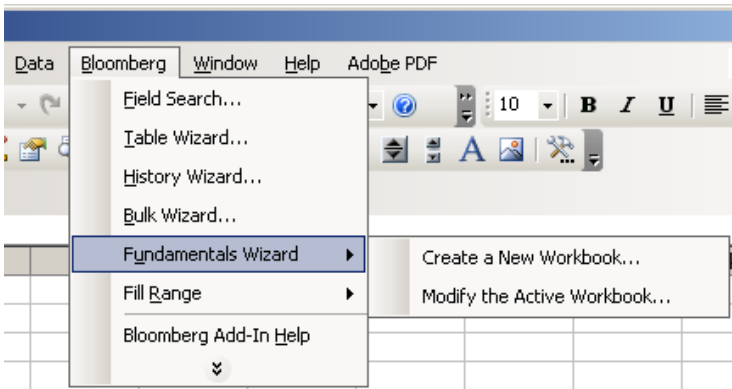
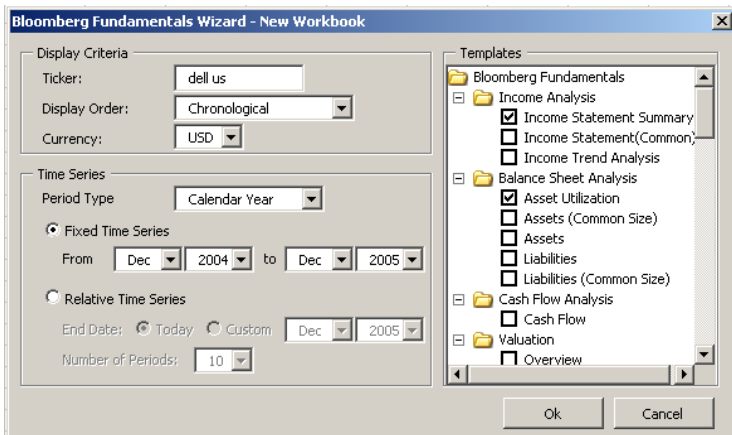


The Fundamental Excel Wizard enables you to access templates available from the Fundamental Analysis function (FA) and customize them in Microsoft® Excel.



### To Access

Open an Excel Spreadsheet and click on **Bloomberg > Fundamentals Wizard** from the toolbar. You can create a new workbook or edit the current workbook you are working in.



### Choose Your Templates

For this example, choose **Create a New Workbook**.

- Enter an equity ticker in the **Ticker** field to display the applicable FA templates on the right side of the window
- Select the appropriate templates and template settings
- Choose **Chronological** from the **Display Order** dropdown menu
- Click on the **Fixed Time Series** radio button and enter the appropriate date range in the **From** and **to** fields.

	A	B	C	D
1	Ticker		DELL EQUITY	
2	Name		DELL INC	
3	Start Date		1/1/2000	
4	End Date		1/3/2006	
5	Periodicity		CY	
6	Currency			
7				
8	Date:		CY1 2000	CY1 2001
9	Sales/Revenue/Turnover	SALES_REV_TURN	31888	31168
10	Cost of Goods Sold/F.E. & P.P. & G.	IS_COGS_TO_FE_AND_PP_AND_G	25445	25661
11	SG&A / Oth Op / Dep Op & Maint	IS_SGA_OTHER_OP_DEPR_OP_MAINT	3675	3236
12	Operating Income (Losses)	IS_OPER_INC	2768	2271
13	Interest Expense	IS_INT_EXPENSE	47	29
14	Net Non-Oper Losses(Gains)	IS_NET_NON_OPER_LOSS	-473	511
15	Income Tax Expenses (Credits)	IS_INC_TAX_EXP	958	485
16	Inc(Loss) bef Extraord Items	IS_INC_BEF_XO_ITEM	2236	1246
17	Extraord L(G) befor Tax Effects	IS_XO_LOSS_BEF_TAX_EFF	59	0
18	Minority Interests (Credits)	IS_MINORITY_INT	0	0
19	Net Income/Net Profit (Losses)	NET_INCOME	2177	1246
20	EBIT(Earn Bef Int & Tax)	EBIT	2768	2271
21	Debt Income	DEBTAY_INC	2194	1731

### Edit Templates

To edit FA templates, choose from the following:

- Click on the **Fundamentals** icon or click on **Bloomberg > Fundamentals Wizard > Modify the Active Workbook** from the toolbar
- Link data items using Excel's custom **BLP Report Value** function in your custom workbooks to perform in-depth analysis.
- You can then refresh your workbooks and preserve the links